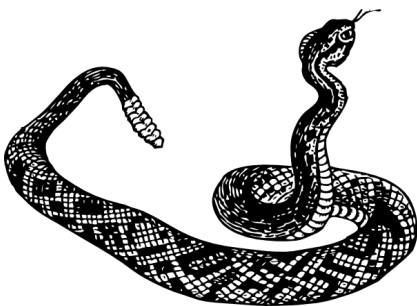


Thursday PM

<b>Time</b>	<b>Presenting Author</b>	<b>Title</b>
1:15		Welcome : Beaman A and B
1:30	Eric O'Neill	Keynote: Past, present and future research on molecular ecology of amphibians and reptiles
2:30		Break
2:45	Dillard, M.J. and T.P. Wilson	Lewis Award: The spatial ecology of the eastern box turtle in urban and fragmented landscapes of southeast Tennessee
3:00	Nelson, S.	Lewis Award: Preliminary evidence of ranavirus in northern watersnakes in Tennessee
3:15	Wilson, T.P., A. Carroll, J. Simpson, C. Manis and Team Salamander	Amphibians, wetlands and the faces of development: who gets the gig?
3:30	Wilson, T.P., B. Reynolds, and Team Salamander	The importance of biological field stations in local conservation and education: a UTC perspective
3:45	Doro Reinsch, S.	Hellbender research at the Nashville Zoo
4:00	Allender, M.	Herpetological diseases
4:20		Break
4:30		Business Meeting
5:30	Dinner	Catered
6:30-8:30		Lewis Memorial Scholarship Auction

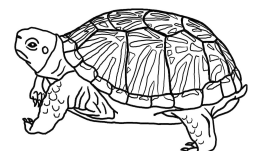


Friday AM

8:45	Meet - Zoo Parking Lot	<b>Nashville Zoo at Grassmere</b>
9:00-10:30	Zoo Tour	
11:00-12:30	Poster Session (see detail page)	Beaman Lobby
12:30-1:30	Lunch	Belmont Blvd (on own)

Friday PM

<b>Time</b>	<b>Presenting Author</b>	<b>Title</b>
1:30	Stanley, J.W., K. Harris, and T. D. Marsico	Natural History Collections Curation Club (NHC3): its creation and activities at Arkansas State University and expansion to other universities
1:45	Hamed, K., W.B. Sutton, and M.J. Gray	Changes in spatial distributions of plethodontid salamanders along elevation gradients in the Mt. Rogers National Recreation Area over a 50-year period
2:00	Campbell, J.	A comparison of migratory movements of spotted salamanders ( <i>Ambystoma maculatum</i> ) across managed and unmanaged habitats
2:15	Dresser, C.M.	Assessment of mixed source reintroduction strategies: a case study from a bog turtle management program
2:30	Ogle, C.	An update of amphibian and reptile surveys on wildlife management areas within TWRA's administrative region 4.
3:00	Barns, S.	Influence of food restriction on plasma corticosterone and innate immunity and blood chemistry in the brown African house snake <i>Lamprophis fuliginosus</i>
3:15	Sutton, W.B. M. J. Gray, J. T. Hoverman, R.G. Secrist, P. Super, R. Hardman, J. L. Tucker, and D.L. Miller	Trends in ranavirus prevalence among plethodontid salamanders in the Great Smoky Mountains National Park
3:30	Vannatta, J.M.	Demographic characteristics, seasonal corticosterone, and prevalence of ranavirus infection in the eastern box turtle, <i>Terrapene carolina Carolina</i> .
3:45	Cecala, K.K.	Evaluating the efficacy of alternate conservation scenarios for wetland amphibian conservation



## Poster Session Friday 11:00 -12:30



PRESENTERS	TITLE
CHANEY, J. C., M. J. GRAY, R. D. HILL, J. EARL, R. P. WILKES, AND D. L. MILLER	Ranavirus could cause a threatened toad species to go extinct
REILLY P.N., M. J. GRAY, R. P. WILKES, J.C. CHANEY, R. D. HILL , AND D. L. MILLER	Assessing the risk of pathogen pollution: a preliminary test of co-evolution between ranavirus and wood frogs
PRICE, S.L., K.H. WILD, C A.F. HOWEY, AND C.M. GIENGER	Body condition response of male eastern fence lizards to fire-altered landscapes
BLISS, M. AND K.K. CECALA	Riparian disturbance alters habitat selection behaviors by stream salamanders
YATES, J.M., M.D. NICHOLSON, L.J. BARTON AND B.P. BUTTERFIELD	The freshwater turtle assemblage of Horse Creek, Hardin County, Tennessee
MCGREW, C.	Two ways everyone can contribute to herps in the community
HAMED, M.K.	First in-situ courtship observation of <i>Plethodon yonahlossee</i>
WILSON, T.P., C. MANIS, S. MOSS, R. MINTON, M. SCHORR, AND TEAM TURTLE	Sex ratios and size dimorphisms in the Tennessee River Gorge turtle community
WILSON, T.P., J. BARBOSA, E. CARVER, B. REYNOLDS AND TEAM SALAMANDER	An assessment of <i>Batrachochytrium dendrobatidis</i> infection in two species of ranid frogs on a former United States Department of Defense (DoD) installation in southeastern Tennessee
WILSON. T.P., P. BAKLAND, N. HUNT, S. MADSEN, R. ALTONEN, T. M. WILSON , AND TEAM SALAMANDER	In the shadows of a brownfield at the dawn of Gig City: nest site selection by marbled salamanders ( <i>Ambystoma opacum</i> ) in an isolated wetland in southeastern Tennessee
WILSON, T.P., J. SIMPSON, B. REYNOLDS, P. BAKLAND, N. HUNT, S. MADSEN, R. ALTONEN, B. BIRD, M. COOKSEY, W. GRISBY, M. TAYLOR, M. DILLARD, M. WISDOM, A. MERICIER, G.E SZARKA, J. HOOPER, C. MANIS, T. M. WILSON AND TEAM SALAMANDER	Team Salamander and its evolution in becoming the longest-running group studies initiative at the University of Tennessee at Chattanooga (UTC)
REYNOLDS, B AND T.P. WILSON	A walk in the woods: battling herpetophobia among non-science majors